

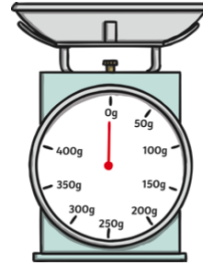
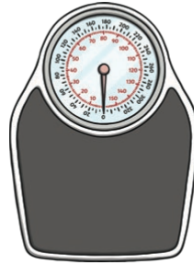
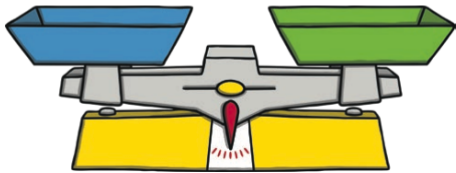


Weight and Mass

Year One Weight and Volume

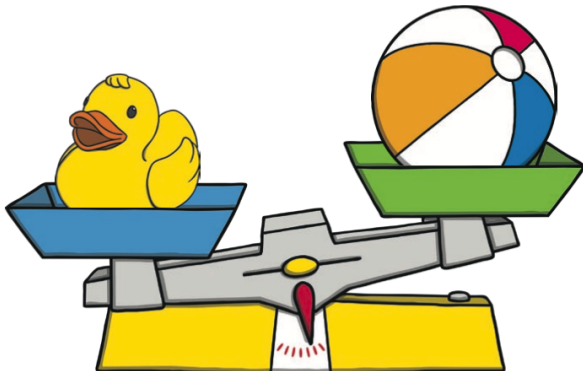


We can use different types of scales to measure mass.



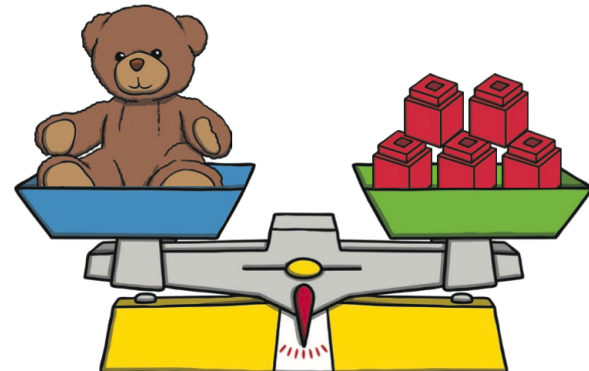
Compare Mass

The duck is **heavier** than the ball.
The ball is **lighter** than the duck.



Measure Mass

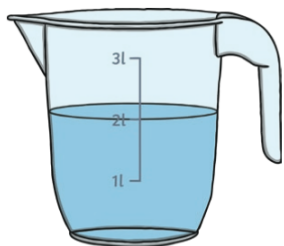
The teddy **weighs** the same as 5 cubes.
They are **balanced**.





Capacity and Volume

We can use different containers to measure volume.



Capacity is the total amount of liquid a container can hold.

Volume is the amount of liquid that is in the container.
This can vary.

Compare capacity

empty

nearly empty

half full

nearly full

full



B has more water than A. D has less water than E.

Measure capacity

It takes 4 cups to fill this jug.



=

