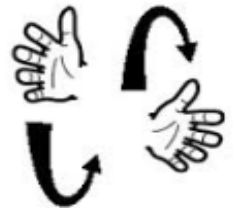


## Coopers Lane Centre for the Deaf



Coopers Lane Centre for the Deaf opened in 2004. Pupils who attend the centre are members of the mainstream school and participate in school lessons, assemblies, playtimes, lunchtime activities, school productions, open days and educational visits.



### What is the communication Policy in the Unit?

We follow a 'Total Communication' approach. This means that we will use any method of communication that a child favours.

Our children may use basic British Sign Language (BSL) when they start with us, however as their language develops they tended to use Sign Supported English (SSE). SSE uses BSL signs but in English word order.



Signing is used to support communication, teaching and learning. We aim to make maximum use of the hearing each child has through consistent use of appropriate amplification e.g. hearing aids, cochlear implant processors, Bone Anchored Hearing Aid (BAHA), radio aids, as appropriate to each child.

There is a soundfield system in most rooms within the school and this is beneficial to all children. It makes the teacher's voice louder and clearer. The aim is to produce a clear and consistent level of sound throughout the classroom. The teacher's voice is made just loud enough to be heard above unwanted background noises. It helps pupils to hear whether they are at the front of the room or the back.



With the support they get at school and home, and the advances of technology some children will become more oral but still need some sign to support their learning.



We aim to provide an enhanced listening environment.

Access to Deaf culture is encouraged and our pupils will occasionally meet up with other deaf children across the borough.

Most of our pupils start their day in the acoustically treated rooms in the centre focusing on individual targets that aim to develop language and listening skills. Then the children and their Support Worker join their mainstream class where the children will work with and alongside their peers. Through out the day they may return to the centre for Speech and Language; 1:1 sessions with the Teacher of the Deaf and/or their 1:1 support. How often will depend on the individual child's needs.

At the end of the day the children who come to school via Lewisham Transport will return to the centre to meet the Driver.

## Who's who?

The children in the centre for the deaf will work with a variety of people. Throughout the week they will work with the following people:-

- Our Lead Teacher of the Deaf (TOD).
- A Speech and language Therapist (SALT) who specialises with working the Deaf children. They assess the deaf child's needs and then devise a program to develop communication. Skills.
- Our Communication Support Workers (CSW) and Signing Teaching Assistants (STA) who work on specific targets set by the TOD and the SALT as well as supporting the pupils in their mainstream class.
- Class Teacher
- Class Teaching Assistant (TA).

## How do children get a place in the Unit?



The London Borough of Lewisham offers children a place in the centre after assessment.

Our children usually have a severe to profound loss and need access to BSL/SSE. They will have been issued with either an Education, Health and care Plan (EHCP) or a Statement of Special Educational Needs, which sets out the specific needs of the child and how these should be met.

The EHC Plan/Statement has to be reviewed each year in partnership with parents.